

# P-VAC SERIES

## VACUUM PUMP PROTECTION FILTERS

operating pressure	<b>20 to 2000 mbar(abs)</b>
volume flow rate	<b>7,5 to 345 Nm<sup>3</sup>/h</b>
connections	<b>3/8" to 3"</b>
operating temp. range	<b>1,5 to 65 °C</b>
standard colour	<b>RAL 5012</b>

### APPLICATIONS

- vacuum pumps

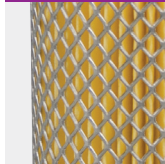
### DESCRIPTION

P-VAC filters are designed for protection of vacuum pumps. These filters are optimised for high-efficient removal of solid particles and other contamination from the suction side of vacuum pumps preventing damage to the pump.

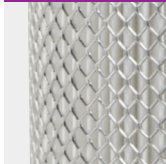
For P-VAC filter series we offer two filtration stages. Rough prefilter "VACP" removes bulk liquid and large solid particles while high efficiency microfilter VACM removes very fine impurities which may damage the pump.



VACP; 3 µm

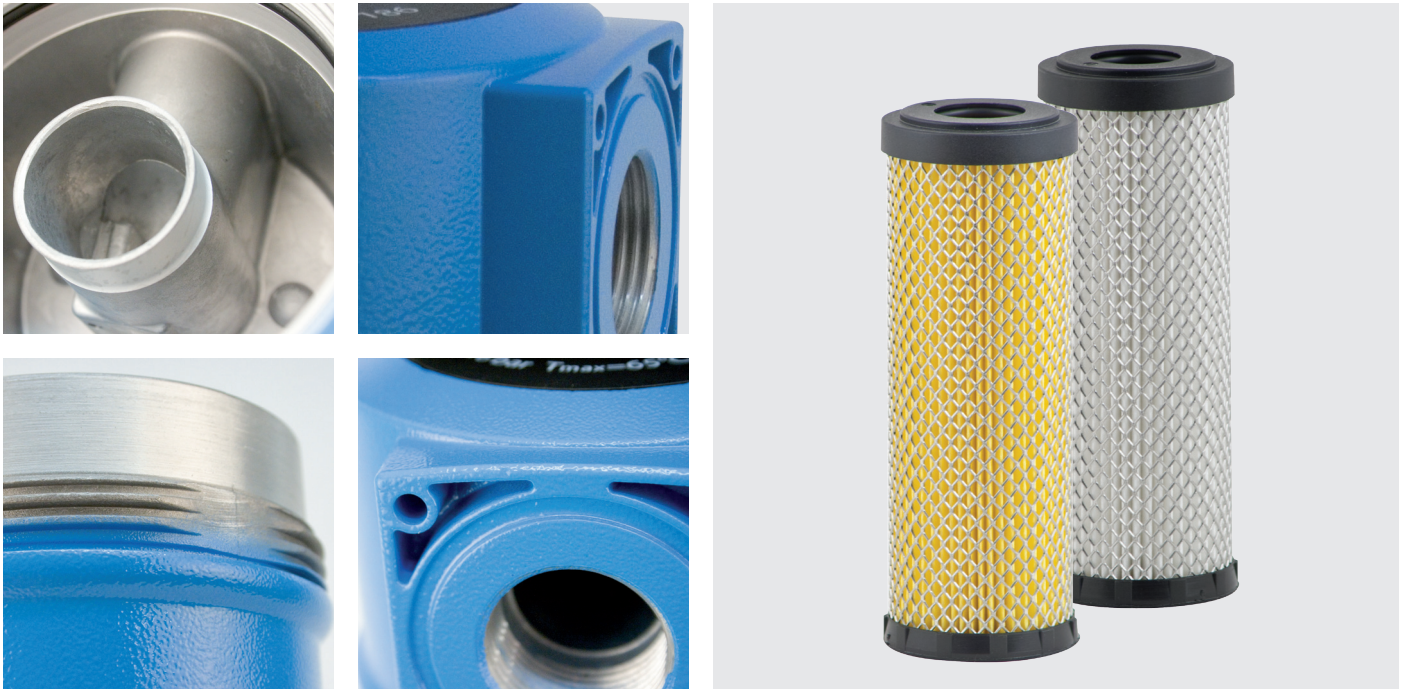


VACM; 0,1 µm



ball valve





TECHNICAL DATA									FILTER ELEMENTS		
Filter model	Pipe size	Free air capacity at atmospheric pressure		Dimensions [mm]				Mass	VACP Prefilter	VACM Microfilter	
		inch	Nm <sup>3</sup> /h	scfm	A	B	C				D
P-VAC 0056	3/8"	7,5	4,5	187	88	20	60	0,7	06050 VACP	06050 VACM	
P-VAC 0076	1/2"	9,8	5,8	187	88	20	60	0,7	07050 VACP	07050 VACM	
P-VAC 0106	3/4"	15,0	8,8	257	88	20	80	0,8	14050 VACP	14050 VACM	
P-VAC 0186	1"	24,8	14,6	263	125	32	100	1,8	12075 VACP	12075 VACM	
P-VAC 0306	1"	41,9	24,7	363	125	32	120	2,5	22075 VACP	22075 VACM	
P-VAC 0476	1 1/2"	63,8	37,6	461	125	32	140	2,5	32075 VACP	32075 VACM	
P-VAC 0706	1 1/2"	97,5	57,4	640	125	32	160	3,2	50075 VACP	50075 VACM	
P-VAC 0946	2"	125	73,6	684	163	43	520	5,1	51090 VACP	51090 VACM	
P-VAC 1506	2"	187	110,4	935	163	43	770	7,1	76090 VACP	76090 VACM	
P-VAC 1756	2 1/2"	210	123,6	935	163	43	770	6,9	76090 VACP	76090 VACM	
P-VAC 2006	3"	270	158,9	795	240	59	630	12,9	51140 VACP	51140 VACM	
P-VAC 2406	3"	345	203	1000	240	59	780	14,0	75140 VACP	75140 VACM	
									pressure drop - new element-dry [mbar / psi]	10 / 0,15	30 / 0,45
									filter media	acrylic fibres, cellulose	borosilicate micro fibres
									min. operating temperature (°C / °F)	1,5 / 35	1,5 / 35
									max. operating temperature (°C / °F)	65 / 149	65 / 149

CORRECTION FACTORS												
Absolute pressure [bar]	1	0,9	0,8	0,7	0,6	0,5	0,4	0,3	0,2	0,1	0,05	0,02
Absolute pressure [psi]	14,7	13	11,6	10,2	8,7	7,3	5,8	3,3	2,9	1,45	0,73	0,29
Correction factor	1	0,9	0,8	0,7	0,6	0,5	0,4	0,3	0,2	0,1	0,05	0,02

• To calculate the correct capacity of a given filter based on actual operating conditions, multiply the nominal flow capacity by the appropriate correction factor.