

CKL-AHP SERIES ALUMINIUM HIGH PRESSURE SEPARATORS

operating pressure	64 bar
volume flow rate	30 to 720 Nm³/h
connections	3/8" to 2"
operating temp. range	1,5 to 65 °C
surface protection	anodization

APPLICATIONS

- general industrial applications
- automotive
- electronics
- food and beverage
- chemical
- petrochemical
- plastics
- paint

DESCRIPTION

CKL-AHP condensate separators are designed for high efficient removal of bulk liquids from compressed air systems. Condensate separator element inside the housing separates already liquified water from mainstream and prevents the liquids and large particles from being airborne again.

To discharge condensate from the CKL-AHP condensate separator it is essential to install automatic or electronic condensate drain.



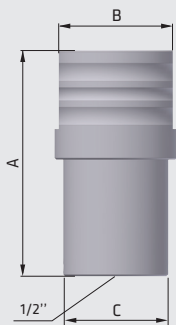
VALVE





TECHNICAL DATA

Filter housing size	Pipe size	Max. oper. pressure bar/psi	Flow rate at 7 bar(g), 20 °C		Temperature oper. range		Dimensions [mm]			Mass kg
	inch		Nm ³ /h	scfm	°C	°F	A	B	C	
CKL-AHP 005	3/8"	64/928	30	17,6	1,5 - 65	35 - 149	167	104	90	2,25
CKL-AHP 007	1/2"	64/928	60	35,3	1,5 - 65	35 - 149	167	104	90	2,25
CKL-AHP 010	3/4"	64/928	120	70,6	1,5 - 65	35 - 149	232	104	90	2,84
CKL-AHP 018	1"	64/928	180	106	1,5 - 65	35 - 149	258	150	120	6,45
CKL-AHP 030	1 1/4"	64/928	270	159	1,5 - 65	35 - 149	358	150	120	7,8
CKL-AHP 047	1 1/2"	64/928	360	212	1,5 - 65	35 - 149	458	150	120	9,17
CKL-AHP 094	2"	64/928	720	423	1,5 - 65	35 - 149	665	170	120	16,5



quality class - solids (ISO 8573-1)	-
quality class - water (ISO 8573-1)	8
quality class - oils (ISO 8573-1)	-
efficiency	>98%

CORRECTION FACTORS

Operating pressure [bar]	3	5	7	10	13	16	20	30	40	50	60	64
Operating pressure [psi]	44	72	100	145	189	232	290	435	580	725	870	928
Correction factor	0,50	0,75	1	1,38	1,75	2,13	2,63	3,88	5,13	6,38	7,63	8,13